

# UNIT 4, SHOTOVER RISE

Stage 3, Stalker Road, Queenstown



**FOWLER  
HOMES™**

Est. 1984

YOUR STYLE OF LIVING



# WELCOME TO FOWLER HOMES

---

Building kiwi homes since 1984,  
let's build yours.

Fowler Homes has been in the home building industry since 1984, we have established a trusted brand with nationwide recognition. Our product offering is diverse, there is no job too big or too small. We provide custom design & build services, a plans range to build from or provide inspiration and direction, knock down and rebuild services, house & land, and turnkey packages across New Zealand.

At Fowler Homes, we pride ourselves on building the home that suits your section, budget, and lifestyle.

We work with you from the start to bring your ideas of your dream home to life, utilising years building experience and industry knowledge.

---

[www.fowlerhomes.co.nz](http://www.fowlerhomes.co.nz)

# TURNKEY HOUSE & LAND PACKAGE



**Unit 4, Stage 3,  
Shotover Rise,  
Queenstown**







**For Sale: \$1,295,000**  
**Rental Assessment:  
\$975 - \$1,075**

A two-story turnkey house and land package. The main living area, galley kitchen, and dining space are open-plan and located on the ground floor, which also features a guest toilet and a compact laundry space.

Take the central stairs to the first floor, where you'll find a master suite with views to Coronet Peak, a large sliding wardrobe, and an ensuite. The family bathroom includes a corner shower, bathtub, and toilet. The two bedrooms are a good size, each with built-in wardrobes. You'll also have a handy study nook and additional storage. The home features a single garage with internal access, and off-street parking.

Secure your new home with a 5-10% deposit and balance on completion.

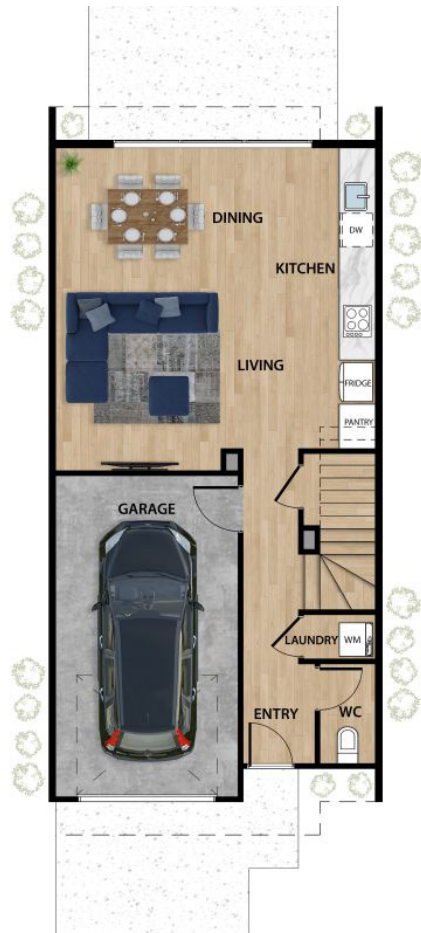
## Specifications

-  Section Size 130m<sup>2</sup>
-  Floor Area 147m<sup>2</sup>
-  Bedrooms 3
-  Bathrooms 2
-  Living 1
-  Garage 1



# FLOOR PLAN

Unit 4, Stage 3, Shotover Rise, Queenstown



Ground Floor



First Floor

## Specifications

 Bedrooms 3

 Bathrooms 2

 Living 1

 Garage 1

 Section Size 130m<sup>2</sup>

 Floor Area 147m<sup>2</sup>



**FOWLER  
HOMES**<sup>TM</sup>

Est. 1984

YOUR STYLE OF LIVING

# HOME FEATURES

---

This brand new home comes with the following interior and exterior features. Full details are in Addendum.

## INTERIOR

- Windsor internal door hardware
- Thermal heart with Solux Low E Glass windows
- Lattitude LAT02 Entry Door
- Ensuite, bathroom & WC obscured glass
- Solar Opening Velux Skylights to upstairs ensuite & bath
- Nordzco Kitchen and joinery
- Fisher & Paykel kitchen appliances
- Glass kitchen splashback
- High Wall Heat Pump
- Stiebel Eltron Trend M bedroom wall heaters
- Carpet & vinyl plank flooring
- Window treatments
- Open plan living
- Indoor-outdoor flow

## EXTERIOR

- Thermally Modified Pine Vertical Shiplap Timber and James Hardie Oblique
- MaxRaft Maxslab 300m
- Coloursteel Superdeck Roof
- Dominator sectional Valero insulated garage door
- Exposed Aggregate concrete path, patio and driveway
- Soft landscaping
- Off-street parking



# HOME UPGRADES

---

Talk to our team about the upgrades that can be included on your new build as an additional cost.

- Ducted heat pump system
- Gunmetal plumbing fittings
- Roller blinds to Roman blinds in bedrooms
- Interior Paint – 3 shades of white
- Laundry joinery
- Wardrobe joinery
- Garage carpet
- Tiled bathroom floors
- Tiled showers
- Tiled feature wall in bathroom
- Under tile heating
- Tiled kitchen splashback



# THE LOCATION

---

Shotover Rise is located at the entrance of Shotover Country off Stalker Road, beside the Arvida Queenstown Country Club.

These turnkey house and land packages offer families an opportunity to live in a sought-after neighbourhood close to many essential amenities. Residents will enjoy the convenience of Shotover Primary School, Kawarau Park Medical Centre, Gems Childcare, 11th Avenue by Franks, the Night & Day convenience store and local bus network.

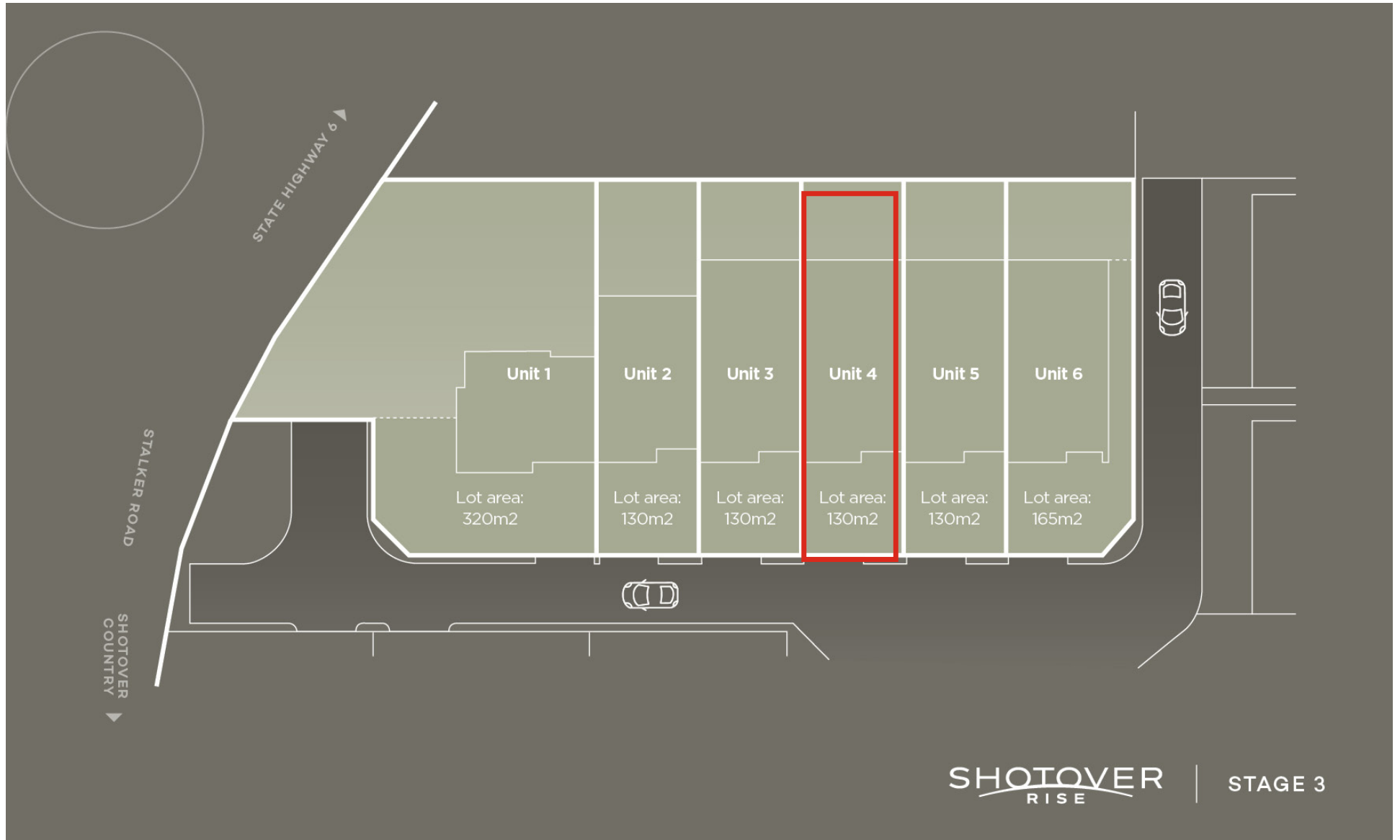
Frankton is a short 5-minute drive where you will find local shopping centres, and the Queenstown Airport.

Explore the nearby Queenstown twin river trails by bike or foot.

Shotover Rise is a thoughtfully designed development project, that ensures a quality style of living for future residents.



# THE LOCATION



# WHY BUILD WITH US?

---

## 6 SOLID REASONS TO BUILD WITH FOWLER HOMES

- 1** — Fowler Homes has been building homes for Kiwis since 1984 and are one of the longest standing group home building companies in New Zealand
- 2** — We are New Zealand owned & operated. You will work directly with the business owners and their project management teams
- 3** — We offer a range of build options including custom design & build, standard plans range, house & land, and turnkey packages, knock down and rebuild
- 4** — We work with our clients and custom design your home, to suit your section, budget & lifestyle
- 5** — We have access to the best suppliers, contractors & group pricing rates and present you with a fixed priced contract
- 6** — Build with peace of mind, all our homes come with the 10-Year Master Builders Guarantee.

## GUARANTEES

Every Fowler Homes build comes with a 10-year Master Build Guarantee. A Master Build Guarantee protects you through the building process and for the next 10 years.

—

Fowler Homes has a 12-month Building Defect Warranty Period, effective from the date of completion. This covers you for any defects that may become apparent after Completion and Final Inspection.

—

Individual supplier warranties and guarantees will also be available.



**FOWLER  
HOMES™**

Est. 1984

YOUR STYLE OF LIVING

# CONTACT US

---



Fowler Homes Queenstown  
Jason McGirr, Managing Director  
027 324 7666  
jason@fowlerhomes.co.nz



## Online

Want to find out more about Fowler Homes? Visit [fowlerhomes.co.nz](http://fowlerhomes.co.nz) for inspiration.

---

**Proud to be locally owned  
and operated since 1984.**

## Testimonials

"Thoroughly enjoyed the whole build process with Fowler's. This was our first build so we didn't know what to expect. The communication from Jason, Damian, and Ed was excellent. Such a great team to work with and we would definitely build with Fowlers again. Our house has turned out very nicely, we are very happy with it. The finish is of very high quality." Will and Hamish

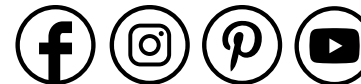
"We recently built a new home in Hanley's Farm with Fowler Homes and have been very impressed with them throughout! They completed the build in less than 6 months from start to finish, provided weekly updates on build progress with photos (using a handy app called BuilderTrend), and where there to help every step of the way if we had questions or needed anything. If I have another build project in the future, I will definitely be using them again." Drew Eckman



**FOWLER  
HOMES™**

Est. 1984

YOUR STYLE OF LIVING



## Social

Connect with us on social media for all the latest news, trend alerts and updates from our team.

@fowlerhomesnz



---

**[www.fowlerhomes.co.nz](http://www.fowlerhomes.co.nz)**

\*Images and floor plans are an artist's impression only.  
Interior and Exterior features are subject to change. All  
final details are confirmed in the Contract.