

# LOT 808, WOOLSHED ROAD

---

Hanley's Farm, Queenstown



  
**FOWLER  
HOMES™**  
Est. 1984  
YOUR STYLE OF LIVING



# WELCOME TO FOWLER HOMES

---

Building kiwi homes since 1984,  
let's build yours.

Fowler Homes has been in the home building industry since 1984, we have established a trusted brand with nationwide recognition. Our product offering is diverse, there is no job too big or too small. We provide custom design & build services, a plans range to build from or provide inspiration and direction, knock down and rebuild services, house & land, and turnkey packages across New Zealand.

At Fowler Homes, we pride ourselves on building the home that suits your section, budget, and lifestyle.

We work with you from the start to bring your ideas of your dream home to life, utilising years building experience and industry knowledge.

---

[www.fowlerhomes.co.nz](http://www.fowlerhomes.co.nz)



# TURNKEY HOME & UNIT LAND PACKAGE

---



**Lot 808, Woolshed  
Road, Hanley's Farm**

**For Sale: \$1,716,000**

Rental Assessment:  
House \$1,100 - \$1,225 pw  
Unit: \$550 - \$600 pw

A great 3-bedroom turnkey new home package with 1-bedroom unit attached is now available for purchase in popular Hanley's Farm, Queenstown.

The main home has an open kitchen, dining and living area. The home will suit many family situations with 3-bedrooms, 2-bathrooms, and double car garage with laundry inside.

Designed to capture the views, this home and income property is your opportunity to lay down foundations for a family home with income stream attached.

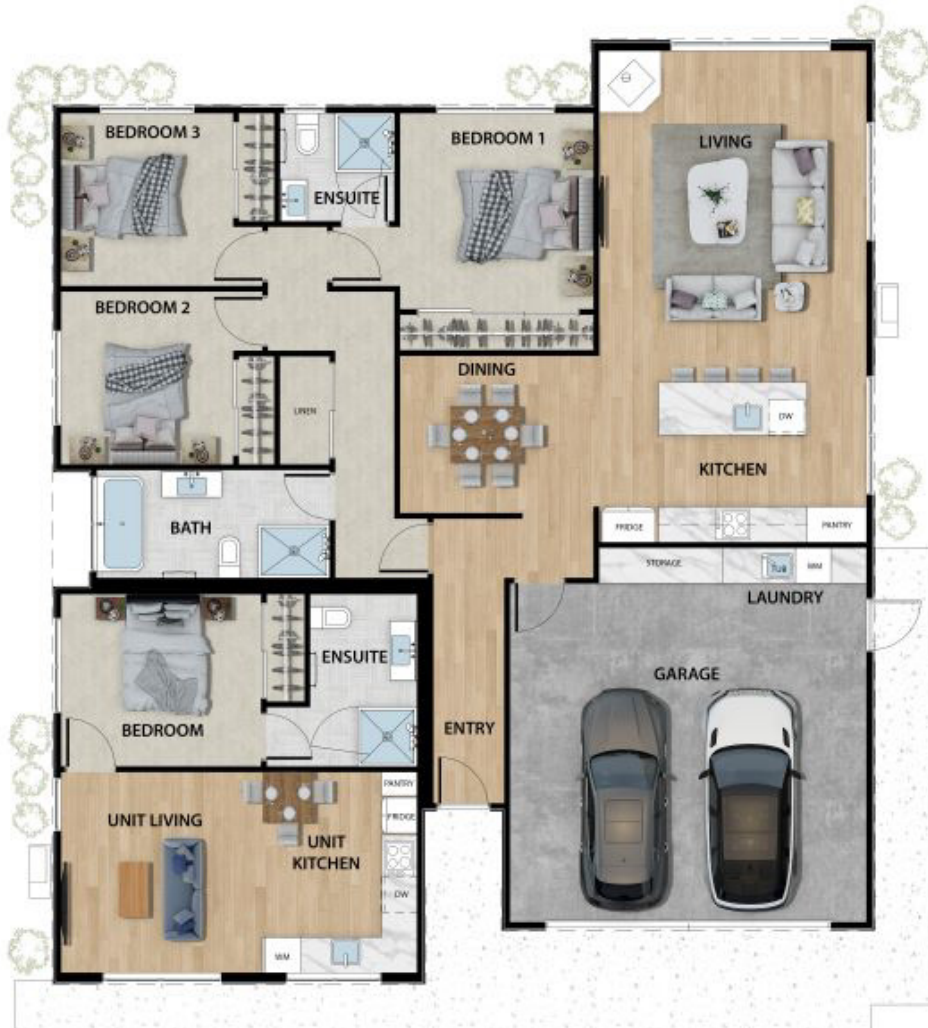
## Specifications

- ↕ □ Section Size 376m<sup>2</sup>
- ↕ □ Floor Area 196m<sup>2</sup>
- 🛏 Bedrooms 4
- 🚿 Bathrooms 3
- 🛋 Living 2
- 🚗 Garage 2





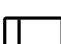



# HOUSE PLAN

Lot 808, Woolshed Road, Hanley's Farm, Queenstown



## Specifications

-  Bedrooms 4
-  Bathrooms 3
-  Living 2
-  Garage 2
-  Length 15.76m
-  Width 13.72m



# HOME FEATURES

---

**Lot 808, Woolshed Road, Hanley's Farm, Queenstown**

## **INTERNAL**

- Custom Nordzco kitchen joinery
- Fisher & Paykel appliances
- Custom wardrobe systems
- Window treatments
- Windsor door hardware
- Undertile heating
- Tiled bathroom floors, skirts, shower walls & bath splashback
- Laundry cabinetry
- Metro Fires Wee rad wood burner
- Ducted Rinnai heat system to main and high wall to unit

## **EXTERNAL**

- Maxraft insulated 300 slab
- James Hardie Vertical Oblique
- Vertical Shiplap larch
- Coloursteel Superdek roofing
- Dominator Insulated Garage Door
- Concreted driveway, paths & patio
- Soft landscaping
- Protecture Exterior Joinery with Double glazing, Low E and Thermal heart





# THE LOCATION

---

Hanley's Farm stretches harmoniously between Lake Wakatipu, Deer Park Heights and The Remarkables on State Highway 6 to Invercargill. The development is 13-kilometers from central Queenstown, and 6-kilometres from Frankton.

Hanley's Farm has a primary school, day care, an epic pump track, two playgrounds, fitness area and Café Bar. And if you didn't know already, it's near the Jack's Point Golf Course & Clubhouse, and the Remarkables Ski Field!



# CONTACT US

---



Fowler Homes Queenstown  
Jason McGirr, Managing Director  
& Licensed Building Practitioner  
027 324 7666  
[jason@fowlerhomes.co.nz](mailto:jason@fowlerhomes.co.nz)



## Online

Want to find out more about Fowler Homes? Visit [fowlerhomes.co.nz](http://fowlerhomes.co.nz) for inspiration.



**FOWLER  
HOMES**™

Est. 1984

YOUR STYLE OF LIVING

---

**Proud to be locally owned  
and operated since 1984.**

## Testimonials

"We can wholeheartedly recommend Fowler Homes to anyone seeking a building company that delivers quality, professionalism, and a hassle-free building experience." Lisa Leftley

"Jason and his team have an excellent knowledge of the market, have good connections in the supply chain, and have quality systems in place. As a further indication of our satisfaction with Jason and his team at Fowler Homes – we are doing it all again!" Robin Martin



## Social

Connect with us on social media for all the latest news, trend alerts and updates from our team.

[@fowlerhomesnz](https://www.instagram.com/fowlerhomesnz)

---

**[www.fowlerhomes.co.nz](http://www.fowlerhomes.co.nz)**