

# Townhouse 5, 26 Sydney Street

Speydon, Christchurch



  
**FOWLER  
HOMES**<sup>™</sup>  
Est. 1984  
YOUR STYLE OF LIVING



# WELCOME TO FOWLER HOMES

---

Building kiwi homes since 1984,  
let's build yours.

Fowler Homes has been in the home building industry since 1984, we have established a trusted brand with nationwide recognition. Our product offering is diverse, there is no job too big or too small. We provide custom design & build services, a plans range to build from or provide inspiration and direction, knock down and rebuild services, house & land, and turnkey packages across New Zealand.

At Fowler Homes, we pride ourselves on building the home that suits your section, budget, and lifestyle.

We work with you from the start to bring your ideas of your dream home to life, utilising years building experience and industry knowledge.

---

[www.fowlerhomes.co.nz](http://www.fowlerhomes.co.nz)



# TURNKEY PACKAGE

---



**26 Sydney Street,  
Spreydon,  
Christchurch**







**Turnkey Package:  
\$784,000**

**Rental assessment:  
\$690 per week  
ROI: 4.5%**

This property boasts three spacious double bedrooms, each with built-in robes, and a master bedroom featuring an ensuite, all within a thoughtfully designed layout that includes three toilets, one of which is a guest toilet downstairs.

The designer kitchen showcases engineered stone bench tops, complementing the top-tier appliances, fixtures, fittings, drapes, and blinds throughout. Constructed with quality cladding systems for durability and style, the home also features private, landscaped courtyards with elegant Kwila decking and single-car garaging for secure parking.

## Specifications





-  Outdoor Area 50m<sup>2</sup>m<sup>2</sup>
-  Floor Area 126m<sup>2</sup>
-  Bedrooms 3
-  Bathrooms 2
-  Living 1
-  Garage 1

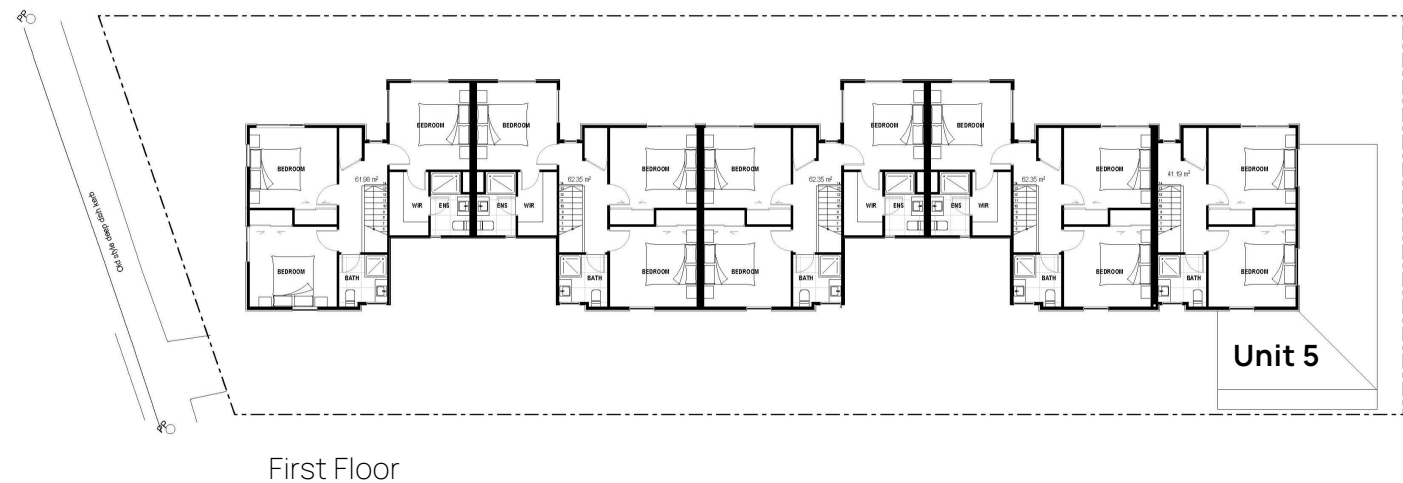
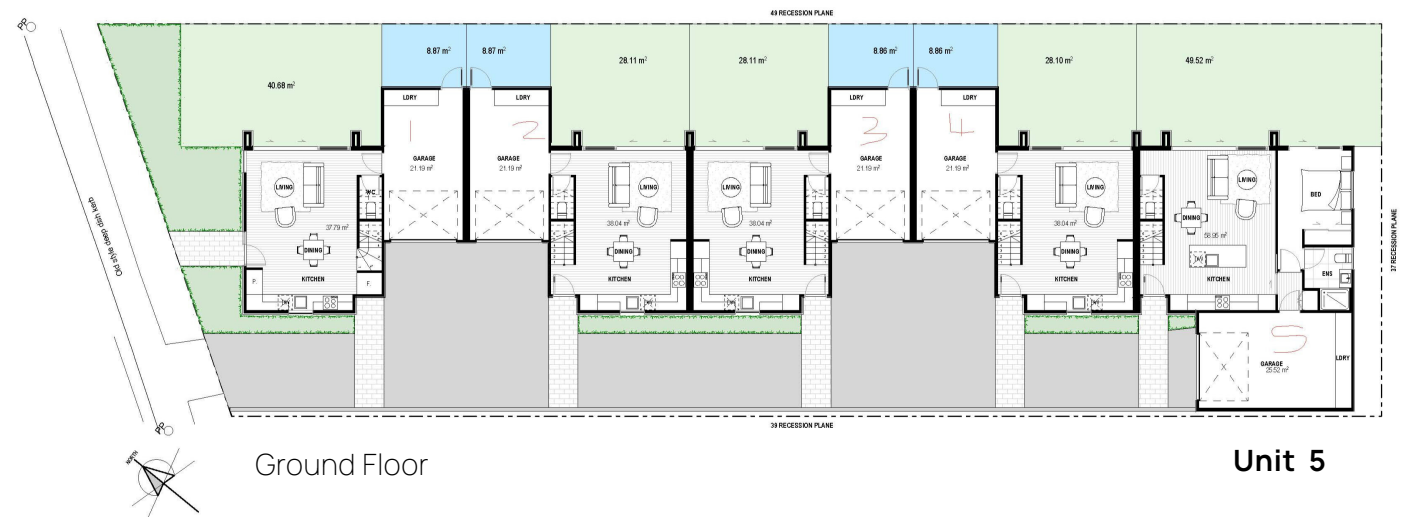


# FLOOR PLAN

26 Sydney Street, Spreydon, Christchurch

## Specifications

-  Bedrooms 3
-  Bathrooms 2
-  Living 1
-  Garage 1





# HOME FEATURES

---

26 Sydney Street, Spreydon, Christchurch

## Interior:

- Nordzco custom designed kitchen
- Bosch appliances
- Stone benchtops
- Open plan living
- Wardrobe systems
- Window treatments
- Separate toilet
- Ensuite
- Tiled bathroom & Ensuite floor
- Walk-in wardrobe
- Heatpump high wall mounted
- Carpet and vinyl plank flooring
- Fibre ready

## Exterior:

- James Hardie Stria cladding
- Horizontal cedar feature cladding
- Rockcote
- Colorsteel roof
- Kwila outdoor decking
- Boundary fencing
- Soft landscaping
- Concrete paths
- Utility area



# THE LOCATION

---

This stunning new development perfectly located just a short stroll from local shops, Barrington Mall, and located in the Cashmere High School Zone, is designed to suit modern family living and savvy investors alike.

Spreydon is a suburb of Christchurch, New Zealand, 4 kilometres (2.5 mi) south-south-west of Cathedral Square. The most central street through Spreydon is Barrington Street. Spreydon is flanked by the suburbs Hoon Hay, Sydenham, and Lower Cashmere. State Highway 76 marks the northern boundary of the suburb, including the eastern end of the Christchurch Southern Motorway.





# WHY BUILD WITH US?

---

## 6 SOLID REASONS TO BUILD WITH FOWLER HOMES

- 1** — Fowler Homes has been building homes for kiwis since 1984 and are one of the longest standing group home building companies in New Zealand
- 2** — We are New Zealand owned & operated. You will work directly with the business owners and their project management teams
- 3** — We offer a range of build options including custom design & build, standard plans range, house & land, and turnkey packages, knock down and rebuild
- 4** — We work with our clients and custom design your home, to suit your section, budget & lifestyle
- 5** — We have access to the best suppliers, contractors & group pricing rates and present you with a fixed priced contract
- 6** — Build with peace of mind, all our homes come with the 10-Year Master Builders Guarantee.

## GUARANTEES

Every Fowler Homes build comes with a 10-year Master Build Guarantee. A Master Build Guarantee protects you through the building process and for the next 10 years.

—

Fowler Homes has a 12-month Building Defect Warranty Period, effective from the date of completion. This covers you for any defects that may become apparent after Completion and Final Inspection.

—

Individual supplier warranties and guarantees will also be available.



# CONTACT US

---



Fowler Homes Christchurch North  
Abby Ley, Owner & Client Liaison  
027 247 9947  
abby@fowlerhomes.co.nz



## Online

Want to find out more about Fowler Homes? Visit [fowlerhomes.co.nz](http://fowlerhomes.co.nz) for inspiration.



**FOWLER  
HOMES**™

Est. 1984

YOUR STYLE OF LIVING

---

## Proud to be locally owned and operated since 1984.

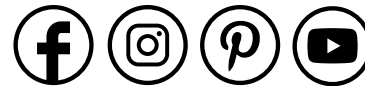
### Testimonial

My husband and I would have no hesitation in recommending Cam and Abby to anyone wanting to work with a reliable, down to earth building team. Throughout the entire build process we were kept informed of progress and all upcoming decisions.

Cam and Abby were always available to discuss fitting selections and to bounce ideas off, which we appreciated considering we had never built a new-build property before. Abby attended meetings with suppliers providing advice and ideas which was appreciated and let us know key milestones and exciting onsite activities that our young children might want to see and be involved in. This consideration was greatly appreciated and made our young family feel involved and excited about onsite progress.

Following completion, we have been impressed with the post completion service we have received. All our requests for touchups to occur have always been quickly agreed and actioned by Cam, without any fuss. With us both working in the construction industry we understand this is often not the case.

Looking back on the process from the comfort of our new home, we are so glad we worked with the Fowler homes team and would recommend them to anyone seeking a professional, reliable, down to earth team. – Ruth Jellyman



## Social

Connect with us on social media for all the latest news, trend alerts and updates from our team.

@fowlerhomesnz

---

**[www.fowlerhomes.co.nz](http://www.fowlerhomes.co.nz)**