



YEARS IN THE MAKING

When a Christchurch couple decided to pull down their former family home and build from scratch, they did so with style.

Words **Soraya Nicholas** Photography **Jamie Armstrong**

FOR OVER 20 YEARS, BILL AND JEANICE Jackman lived in a modest character home on the section that now holds their new house. "It was a great home, but once our boys had grown up and left, we decided to subdivide," says Bill. "It wasn't very Fendalton! So, the house was cut in half and moved off-site to be relocated." Now, the once family sized section has been halved, and the Jackmans have built a brand new home on the rear portion of land. The front section is currently empty, as they decide whether to move into

this house, or sell and build all over again on the front.

Having lived in a character home for most of their married life, it was difficult for Bill and Jeanice to decide on the style of this new house. "Jeanice and our son Simon loved mono-style, but I wasn't so sure," explains Bill. "What we were sure about though was an open-plan design inside, and the flow is excellent." The other decision Bill and Jeanice agreed on whole heartedly was "permanence." The dwelling had to be "as permanent

as possible", and Bill was "absolutely adamant" about this.

Perhaps more difficult than any other consideration was who to select to build their home. The Jackmans obtained four quotes in total, submitting plans they had commissioned independently to all four building companies. From those short listed, **K Fowler Homes Christchurch** stood out from the rest. "Right from the start we got on with Ivan [director, Fowler Homes Christchurch]." They had seen another

	THE SPECS	Christchurch \$400,000 - \$500,000 254 Sq m	 2	 4	 3+toilet	
--	------------------	---	--	---	---	--



house built by the company, and knew of their excellent reputation, so the Jackmans knew choosing Fowler Homes was the right decision.

According to Bill, Ivan worked very closely with them throughout the build, and ensured a high level of quality was maintained. “Ivan worked carefully to ensure there were no problems. Overall, we found him nothing short of excellent. He made every effort to ensure everything was exactly right.”

The main build requirement centred around the Jackmans' desire for permanence. This led to the use of solid brick covered in hand-trowelled plaster, as well as feature points of James Hardie Linea weatherboards. Fowler Homes also carefully went over the plans to ensure energy efficiency. As part of their standard service, the building company appointed a consultant to the Jackmans' project to assist them with colour and other décor choices.

To complete the solid structure of the house, Fowler Homes immediately turned to **Buckland-Brick-Block-Plaster**.

They installed Austral bricks, which were later plastered with Dulux Acratex in colour Kauri Cliffs. Bricks have long been a preferred building material, and in Bill's opinion, the benefits of using bricks made it a non-negotiable choice. Austral bricks in particular resist the bumps and general mishaps of everyday life, and they also offer the security that only such a traditional, well respected product can. Bricks are not affected by adverse or extreme weather conditions, there is no worry about the lifespan of bricks as a material, and they also offer excellent thermal and acoustic benefits.

In keeping with the theme of permanence, aluminium joinery was selected from **Rylock Canterbury**. The Pacific Suite range appealed to the Jackmans, in strong colour Dulux Silver Pearl. Double glazed for warmth and overall energy efficiency, the glass is strong and has good ultraviolet resistance. Aside from the windows and standard opening doors, bi-folds were installed from the open-plan living space, with French doors

ABOVE The homeowners chose bricks as the primary construction material. To create a modern aesthetic, a Dulux Acratex plaster system in colour Kauri Cliffs was applied over the solid brickwork.

chosen for the lounge and downstairs bedroom. All of Rylock's unique aluminium joinery features flush sills and flat-faced frames, including the bi-fold doors. It is this advanced design technology that creates such a stylish, clean visual appearance for the interior and exterior lines of this home.

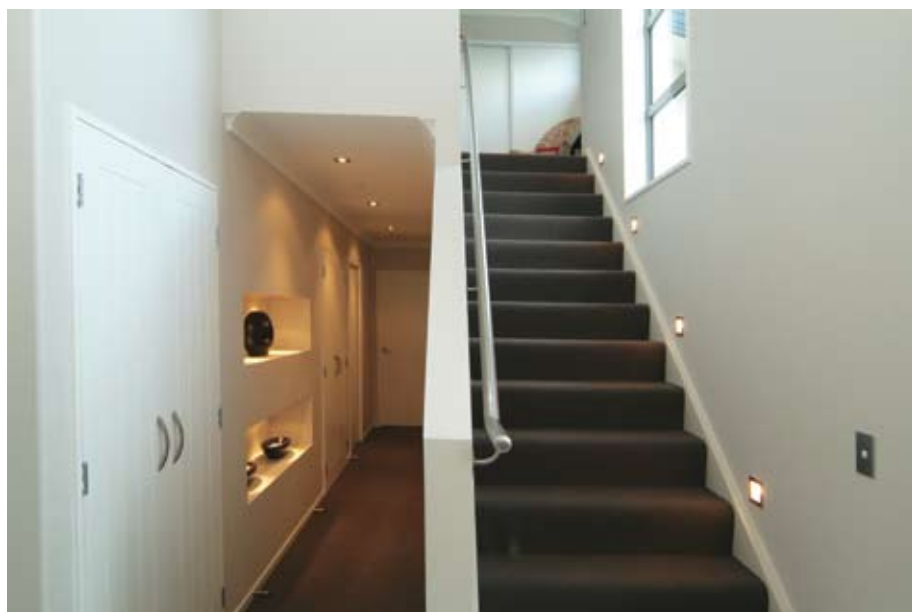
The only external door not from the Rylock range is the striking garage door that is one of the first features noticed from the street. This was supplied by local company **Bowmans Garage Doors**. Chosen in a similar dark shade to complement the exterior joinery, the door is practical and sleek. An automatic opening mechanism is the ultimate in luxury, and is a feature



that many new homeowners are including for their garage doors. Made from Colorsteel this solid door was custom-made and tailored to precisely meet the Jackmans' needs. A second door was also crafted, and is only visible from the rear of the home. This allows access through the garage to the rear courtyard.

Another exterior feature that is often commented on is the use of exposed aggregate. **Groundwork 2003 Ltd** was the company charged with completing this component of the home. The concrete chosen is a standard Greywacke colour, and extends the length of the driveway and out to the patio area. The mix used has been specially designed for extra strength and durability, as well as maximum low-maintenance for modern living.

The interior of the house is easily as stylish as the exterior, and it is obvious each internal decision was met with care. The colours are restful and neutral, with calm shades throughout the house. Upstairs, this tranquillity is met by a designer wallpapered



feature wall, in the master bedroom, and this really makes the room stand out. A splash of colour is also included downstairs in the kitchen, with a red splashback a contrast to the otherwise light walls. "It was a colour we both liked," says Bill, "and we had always

TOP James Hardie Linea weatherboards are used as a feature cladding.

ABOVE Recessed feature cut-outs add a point of difference to the hallway, as does an automated lighting system.



ABOVE A granite bench with waterfall ends completes the galley-style look of the kitchen.

BELOW Wallpaper adds texture to a feature wall in the master bedroom.

wanted to incorporate it. Plus it matches the front door.”

One thing Bill is most pleased with inside is the advanced electric system. Fowler Homes called upon **Caltex Electrical Limited** to install all of the switches, lights and other assorted equipment, and as an added extra, the Jackmans had the electricians fit a Clipsal C-Bus system. This clever automated network controls the lights in the living spaces, so pre-set lighting scenes can be easily activated. In the passageways and walk-in robes, as well as the downstairs toilet, hands-free light activation is set, meaning that the





ABOVE Polished porcelain tiles were placed in all three bathrooms. An Escea gas fire is set on a raised, tiled hearth creating a cosy atmosphere in winter.

Jackmans will never have to fumble for a light switch. Audio visual cabling and security, as well as under-tile heating, was also installed into the home.

The Jackmans have a heat pump and gas fire, so they decided to only have underfloor heating in the bathrooms. To lay the tiles for these wet areas, as well as in the kitchen, they turned to **Tile Contracting Ltd.** Polished porcelain floor and wall tiles were selected, with

clever angles executed in all three showers. Glass mosaics were placed in the main upstairs bathroom, and although it was not part of the original plan, Bill and Jeanice are pleased with the decision. As a part of the Canterbury Master Plasterers & Tilers Association, Tile Contracting were able to give the Jackmans the assurance that their work was completed to a very high standard.

Also working hard in the wet areas of the home was the team from **Wrightway Plumbing.** Involved with Fowler Homes from the commencement of the project, they completed all of the plumbing related work throughout the entire house, from fitting vanities to installing

the tapware in the kitchen. As Master Plumbers, they are well qualified and hard to beat on quality. For this home, all of the fittings were supplied by the building company, although on other projects Wrightway Plumbing can organise complete supply. They are also registered gas fitters, taking care of gas hot water systems and other gas related requirements.

When visitors arrive at the Jackmans' home, they are often surprised by the amount of space. The living areas are sizeable, and open gracefully into one another, and the kitchen being open plan is large enough for any cook. "It's a family size home on a small section," describes Bill. With its downstairs master bedroom option, complete with ensuite, they have designed this home for the future. For them, it means a ground floor option in years to come if required, and for another family, it could mean a downstairs oasis for parents. Bill and Jeanice like to think of it as future proofing at its best. ■

DIRECTORY

BUILDER

K Fowler Homes Christchurch
03 338 8340
www.fowlerhomes.co.nz

EXTERIOR

Buckland Brick-Block-Plaster
027 433 2859

WINDOWS & DOORS

Rylock Canterbury
03 373 6040
www.rylock.co.nz

GARAGE DOOR

Bowman Garage Doors
03 385 7656

CONCRETE

Groundwork 2003 Ltd
0800 87 37 483

PLUMBING

Wrightway Plumbing
021 336 978

TILING

Tile Contracting
03 338 0852

ELECTRICAL

Caltec Electrical Limited
03 384 5960